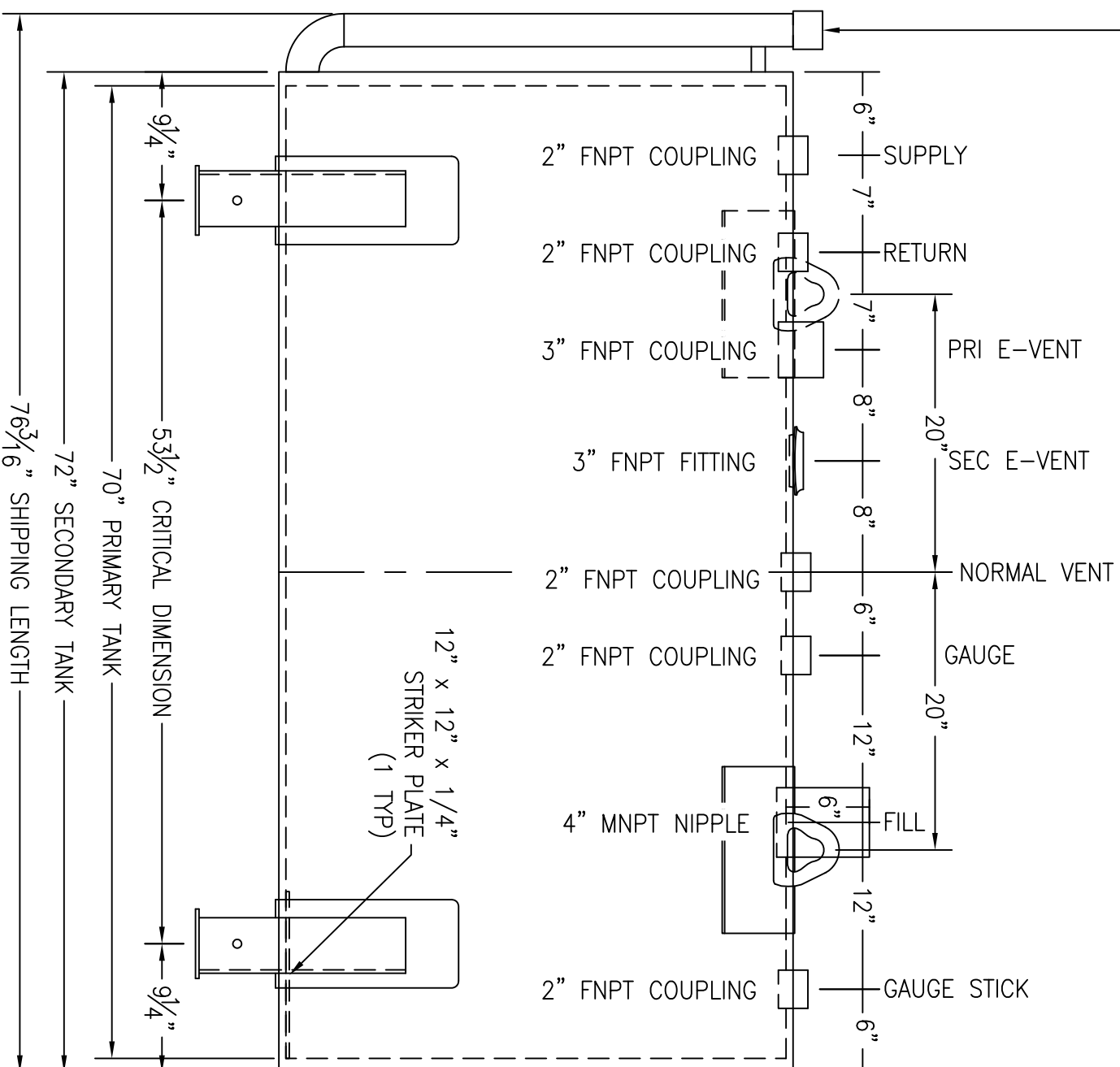
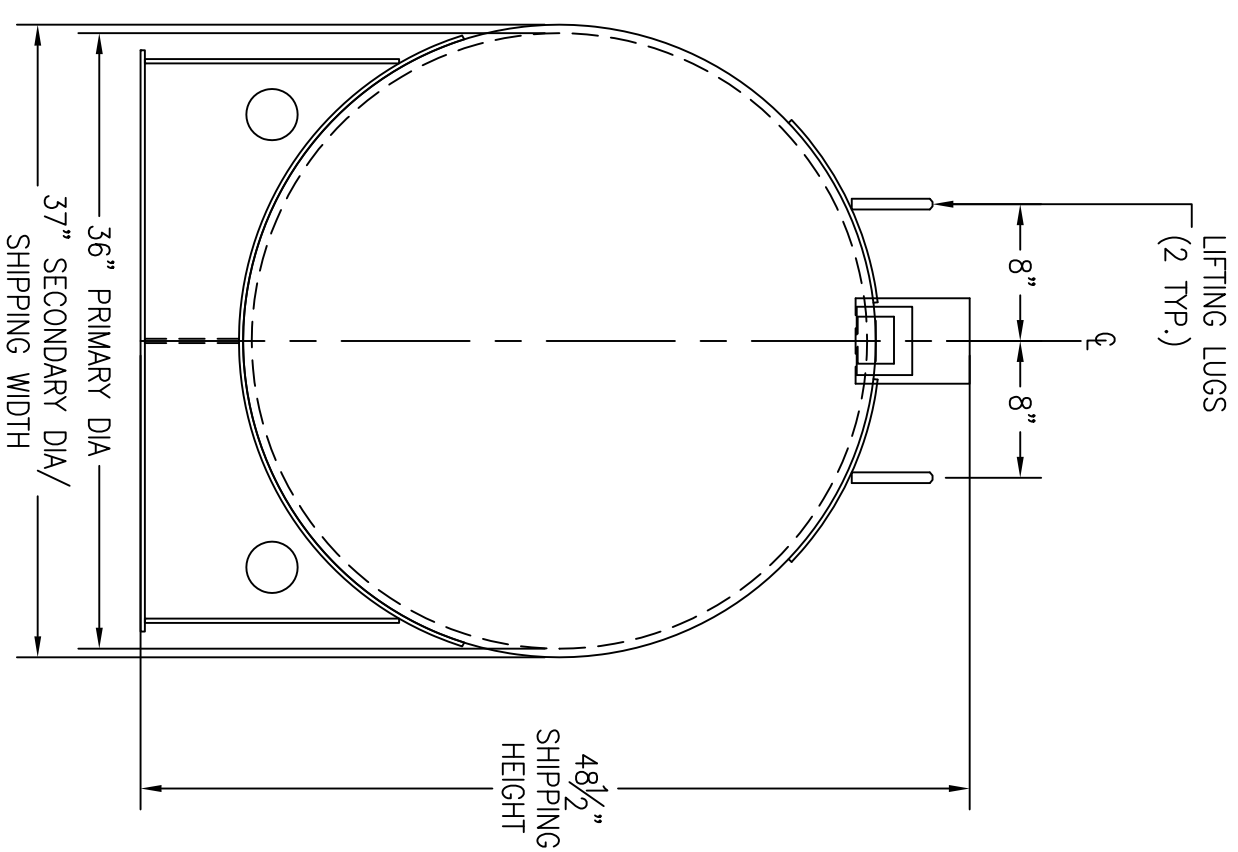


*SADDLES ARE SEAL WELDED TO TANK

2" 90° LONG RADIUS ELBOW WITH 2" SCH. 40 PIPE AND 2" FNPT COUPLING (INTERSTITIAL MONITOR / LEAK DETECTION ACCESS)



9 1/4" CRITICAL DIMENSION
 70" PRIMARY TANK
 72" SECONDARY TANK
 76 3/16" SHIPPING LENGTH



CUSTOMER APPROVAL SIGNATURE/DATE:

300 GALLON HORIZONTAL FLAMESHIELD DWV ABOVE GROUND TANK

SURFACE PREPARATION/COATING INFORMATION:

INTERIOR SURFACES: SSPC-SP-3 POWER TOOL CLEAN WELDS ONLY
 REMOVE ALL LOOSE DEBRIS
 EXTERIOR SURFACES: SSPC-SP-6 COMMERCIAL BLAST
 5-7 MILS ALIPHATIC URETHANE (WHITE)

MATERIAL /CONSTRUCTION/ LABELING INFORMATION:

MATERIAL: CARBON STEEL ASTM A 36 OR A 569
 MATERIAL THICKNESS: PRIMARY TANK SHELL AND HEADS: 10 GA
 SECONDARY TANK SHELL AND HEADS: 10 GA

CUSTOMER:
 PROJECT:
 AGENT:



QUANTITY: ONE (1) REQUIRED
 WEIGHT: 1,100 lbs ± 10%

LABELING/MARKING: UNDERWRITERS LABORATORIES UL-142 / STI FLAMESHIELD

P.O. BOX 1279 GOLDSBORO, NC 27533
 PHONE: (919)751-1791 FAX: (919)751-8186
 DRAWING NUMBER: GIFS30036
 REVISED 7/14

