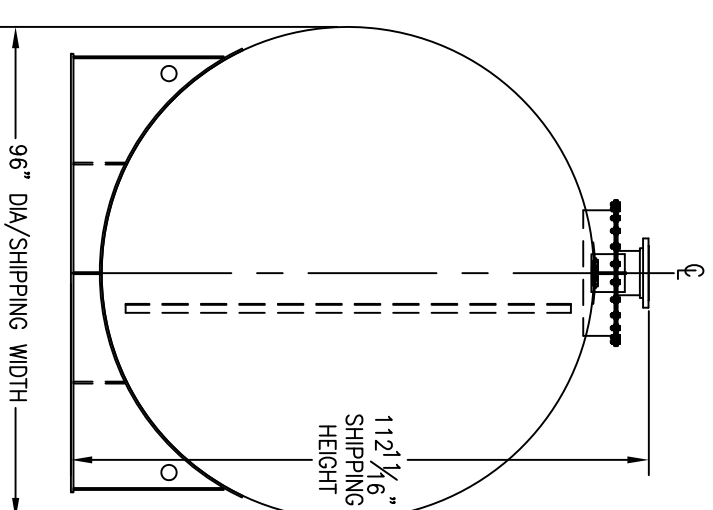
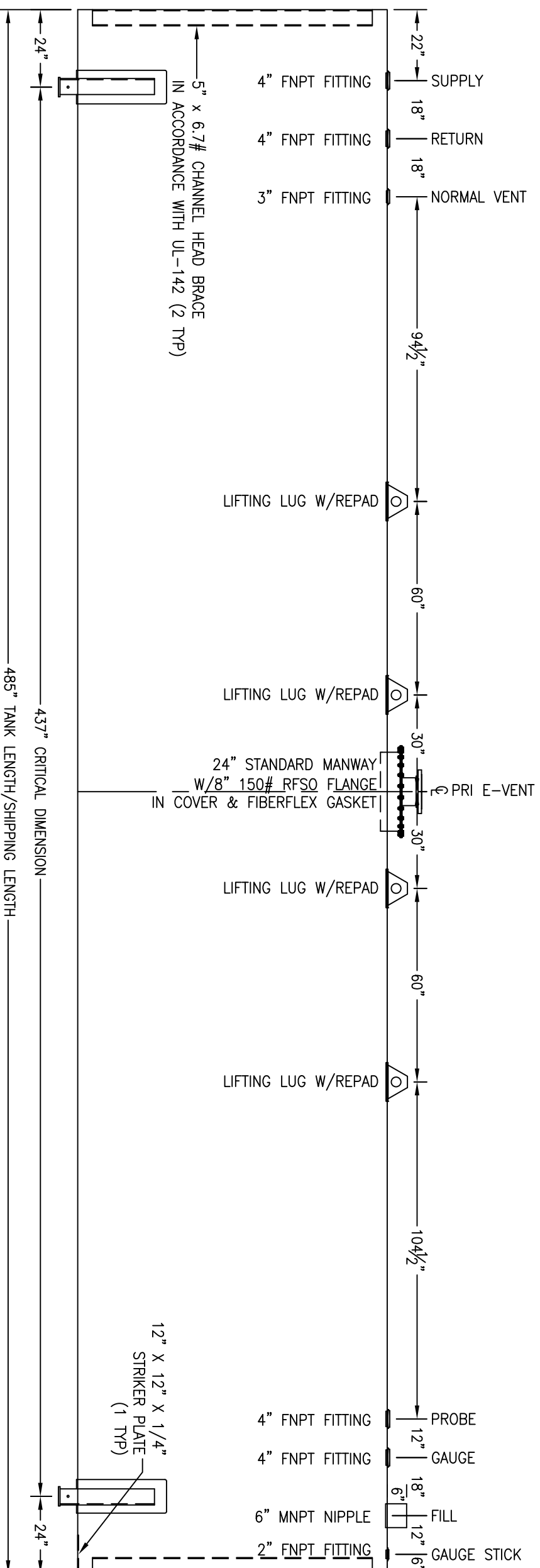


*SADDLES ARE SEAL WELDED TO TANK



CUSTOMER APPROVAL SIGNATURE/DATE:

15,000 GALLON HORIZONTAL SW ABOVE GROUND TANK

SURFACE PREPARATION/COATING INFORMATION:

INTERIOR SURFACES: SSPC-SP-3 POWER TOOL CLEAN WELDS ONLY
REMOVE ALL LOOSE DEBRIS
EXTERIOR SURFACES: SSPC-SP-6 COMMERCIAL BLAST
5-7 MILS ALIPHATIC URETHANE (WHITE)


MATERIAL /CONSTRUCTION/ LABELING INFORMATION:

MATERIAL: CARBON STEEL ASTM A 36 OR 569
MATERIAL THICKNESS: PRIMARY TANK SHELL AND HEADS: 1/4"

LABELING/MARKING: UNDERWRITERS LABORATORIES UL-142

QUANTITY: ONE (1) REQUIRED
WEIGHT: 13,250 lbs ± 10%

CUSTOMER: _____
PROJECT: _____
AGENT: _____



P.O. BOX 1279 GOLDSBORO, NC 27533
PHONE: (919)751-1791 FAX: (919)751-8186
DRAWING NUMBER: GH15K96
REVISED 6/15