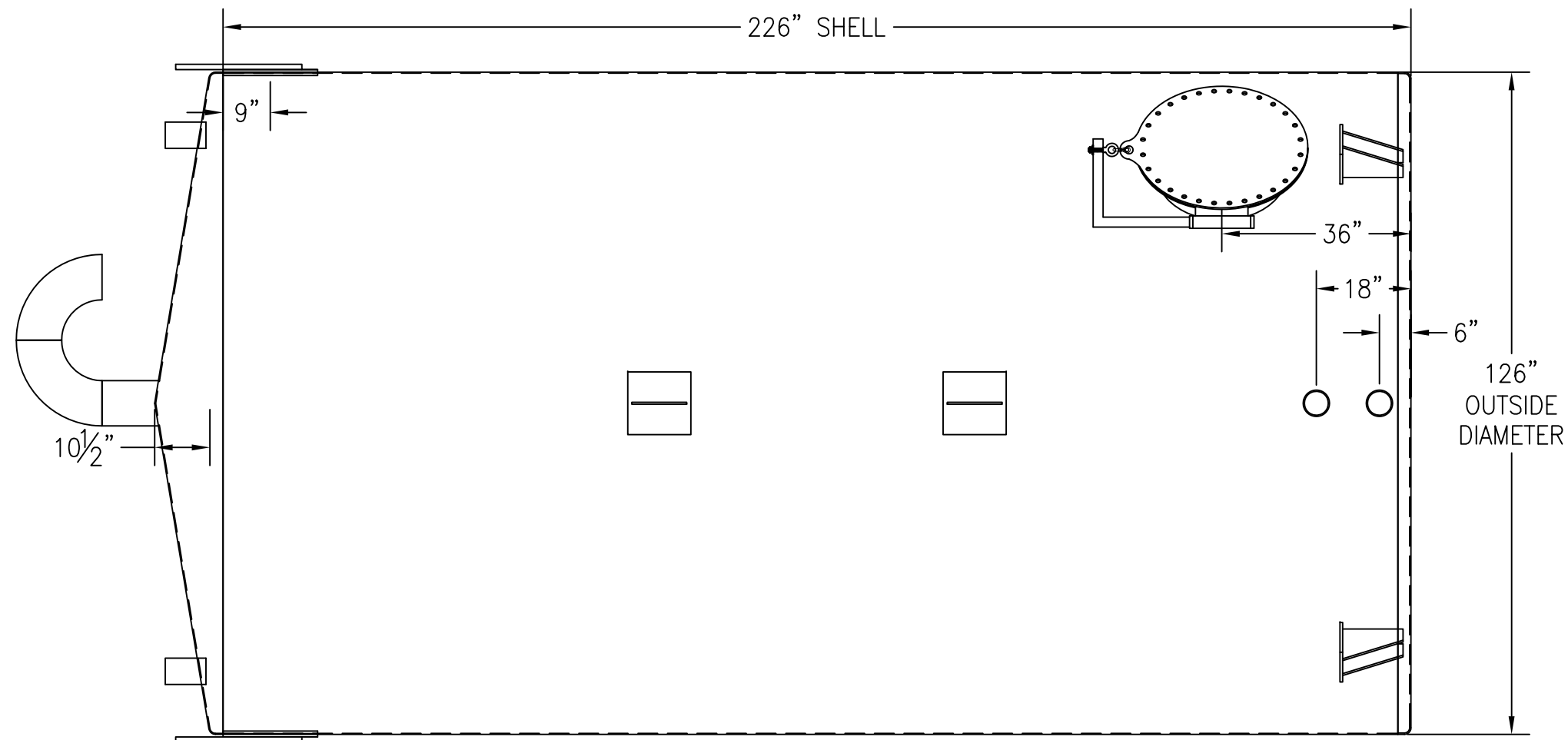
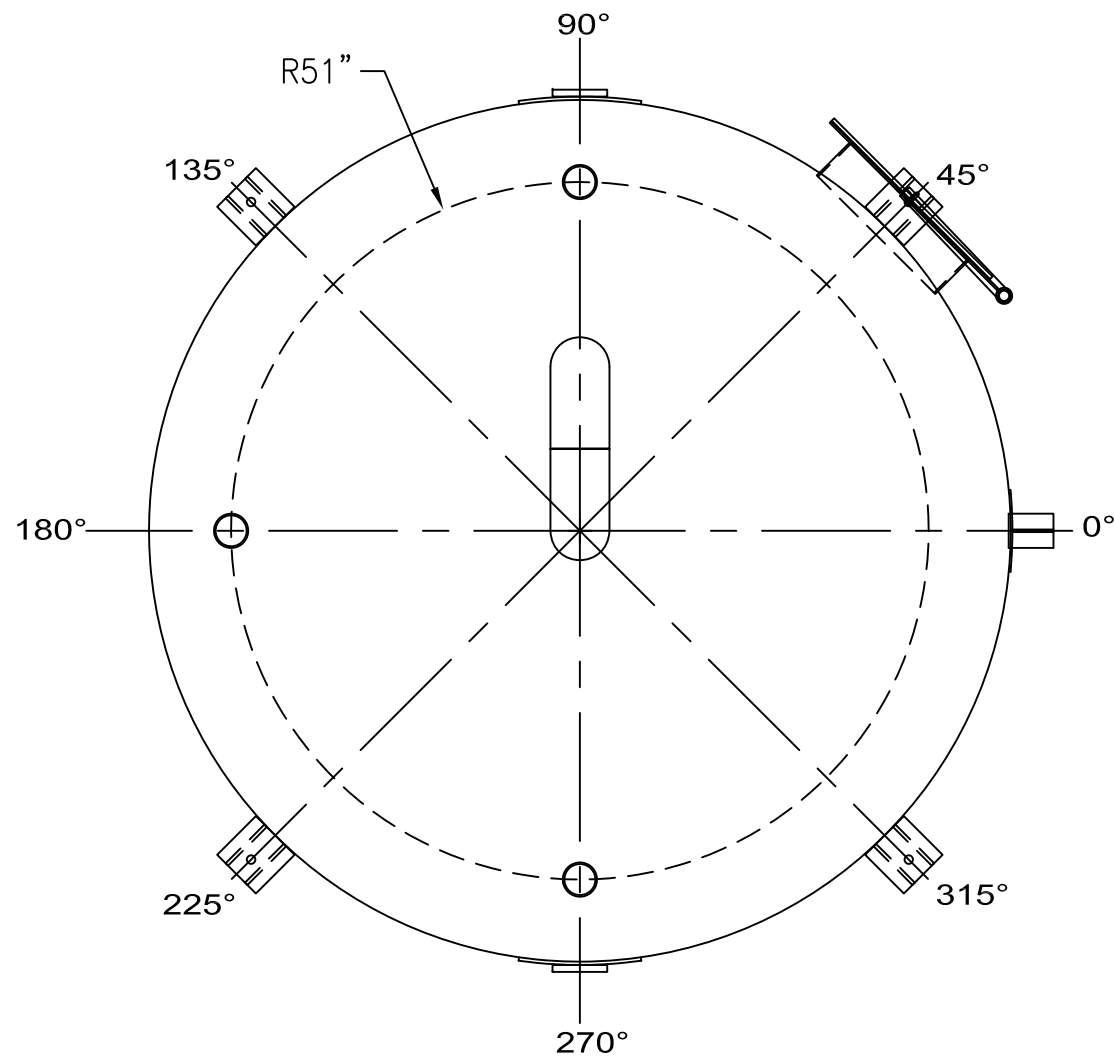


| ANGLE: | LOCATION: | DESCRIPTION: |
|--------|-----------------|------------------------------|
| 0° | SHELL, UP 6" | 4" MNPT NIPPLE |
| 0° | SHELL, UP 18" | 4" MNPT NIPPLE |
| 0° | SHELL, TBD | LIFTING LUG W/REPAD |
| 0° | SHELL, TBD | LIFTING LUG W/REPAD |
| 45° | BOTTOM | ANCHOR CHAIR |
| 45° | SHELL, UP 36" | 24" SHELL MANWAY W/DAVIT ARM |
| 90° | TOP, 51" RADIUS | 4" MNPT NIPPLE |

ALL BOLT HOLES TO STRADDLE MAJOR CENTERLINES OR THEIR PARALLELS

| ANGLE: | LOCATION: | DESCRIPTION: |
|--------|-----------------|----------------------|
| 90° | SHELL, DOWN 9" | ERECTION LUG W/REPAD |
| 135° | BOTTOM | ANCHOR CHAIR |
| 180° | TOP, 51" RADIUS | 4" MNPT NIPPLE |
| 225° | BOTTOM | ANCHOR CHAIR |
| 270° | SHELL, DOWN 9" | ERECTION LUG W/REPAD |
| 270° | TOP, 51" RADIUS | 4" MNPT NIPPLE |
| 315° | BOTTOM | ANCHOR CHAIR |
| N/A | TOP, CENTER | 8" GOOSENECK VENT |

ALL WELDS DOUBLE BUTT
W/FULL PENETRATION



CUSTOMER APPROVAL SIGNATURE/DATE:

12,000 GALLON VERTICAL S/W ABOVE GROUND RAIN WATER STORAGE TANK

SURFACE PREPARATION/COATING INFORMATION:

INTERIOR SURFACES: SSPC-SP-10 NEAR WHITE BLAST
TWO COATS EPOXY

EXTERIOR SURFACES:
SSPC-SP-6 COMMERCIAL BLAST CLEAN
ONE COAT WHITE URETHANE

MATERIAL /CONSTRUCTION/ LABELING INFORMATION:

MATERIAL: CARBON STEEL ASTM A 36 OR ASTM A 569
MATERIAL THICKNESS: TANK TOP & SHELL: 3/16" BOTTOM: 1/4"

LABELING/MARKING:

CUSTOMER:

PROJECT:

AGENT:

GENERAL INDUSTRIES

P.O. BOX 1279 GOLDSBORO, NC 27533
PHONE: (919)751-1791 FAX: (919)751-8186

DRAWING NUMBER:
GIW-RW-12126

11/2014

QUANTITY: ONE (1) REQUIRED
WEIGHT: 7,250 lbs ± 10%