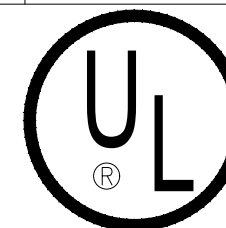


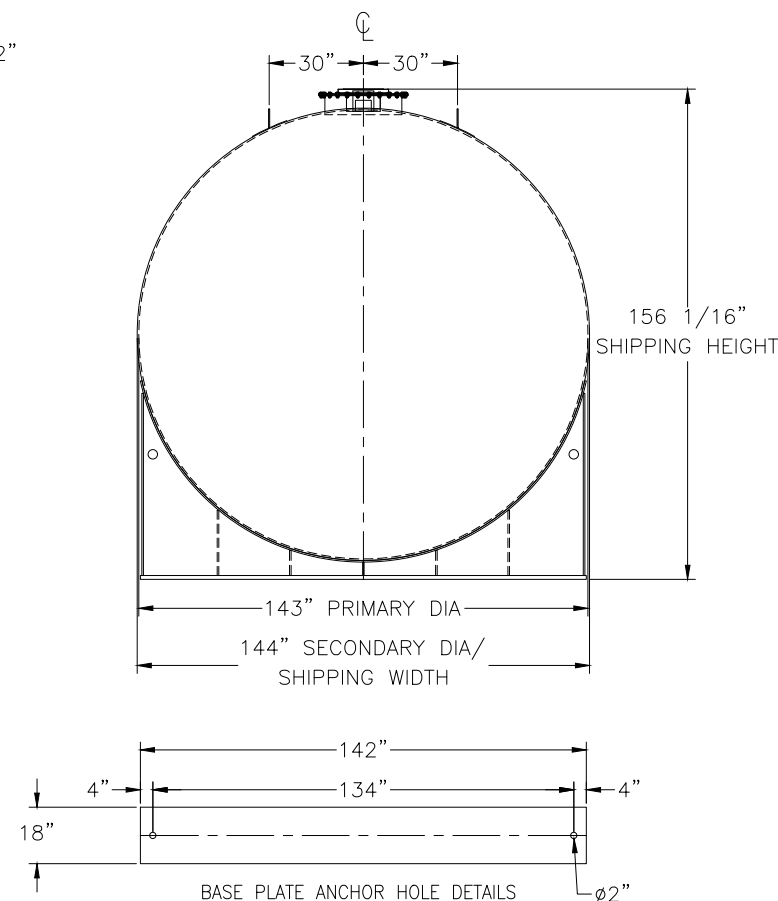
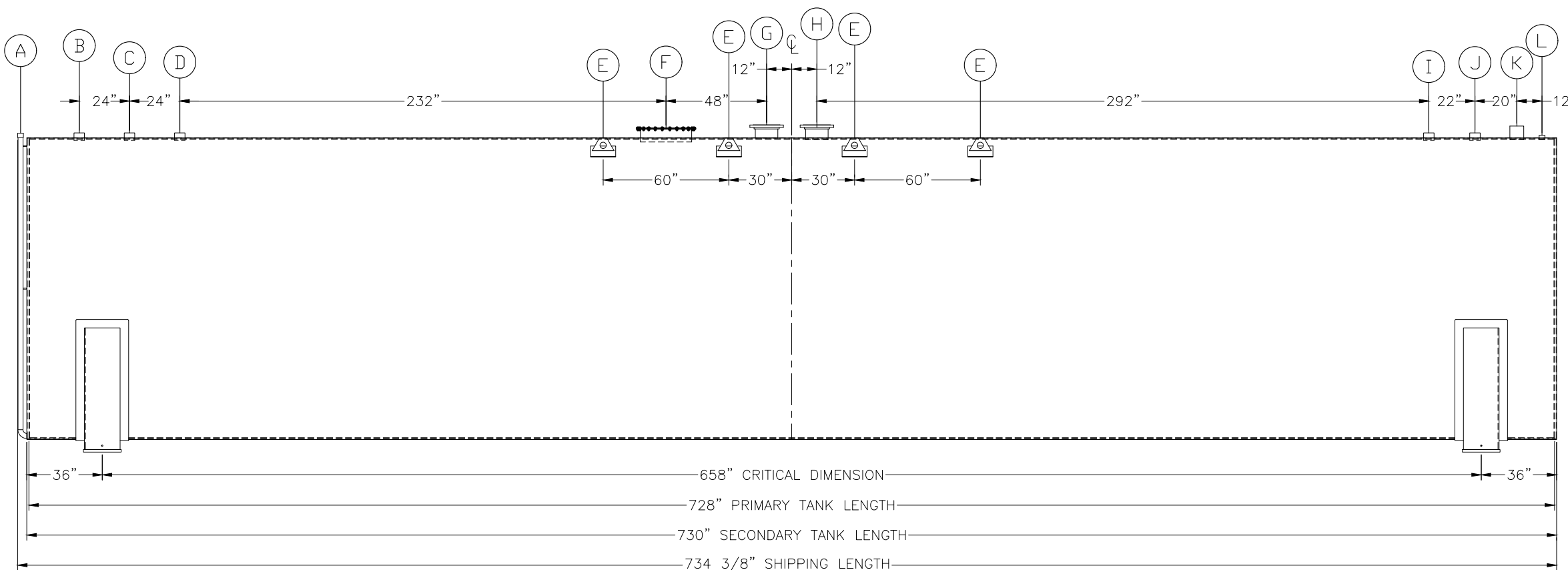
Parts List

ITEM	QTY	SIZE	RATING	TYPE	MATERIAL	PROJ. OUT	FUNCTION	ITEM	QTY	SIZE	RATING	TYPE	MATERIAL	PROJ. OUT	FUNCTION
A	1	2"	FNPT	COUPLING	C.S	-	INTERSTITIAL MONITOR PIPE	G	1	10"	150#	RFSD	C.S	6"	SECONDARY E-VENT
B	1	4"	FNPT	COUPLING	C.S	2 3/4"	SUPPLY	H	1	10"	150#	RFSD	C.S	6 1/2"	PRIMARY E-VENT
C	1	4"	FNPT	COUPLING	C.S	2 3/4"	RETURN	I	1	4"	FNPT	COUPLING	C.S	2 3/4"	PROBE
D	1	4"	FNPT	COUPLING	C.S	2 3/4"	NORMAL VENT	J	1	4"	FNPT	COUPLING	C.S	2 3/4"	GAUGE
E	8	-	-	-	C.S	-	LIFTING LUG	K	1	6"	MNPT	NIPPLE	C.S	6"	FILL
F	1	24"	-	-	C.S	4 3/4"	24" STANDARD MANWAY	L	1	2"	FNPT	COUPLING	C.S	1 3/8"	GAUGE STICK



Underwriters Laboratories Inc.
LISTED ®

ALL DIMENSIONS ARE FROM THE PRIMARY TANK W/ EXCEPTION OF SECONDARY E-VENT



CUSTOMER APPROVAL SIGNATURE/DATE:

50,000 GALLON HORIZONTAL D/W ABOVE GROUND TANK

DESIGN DATA

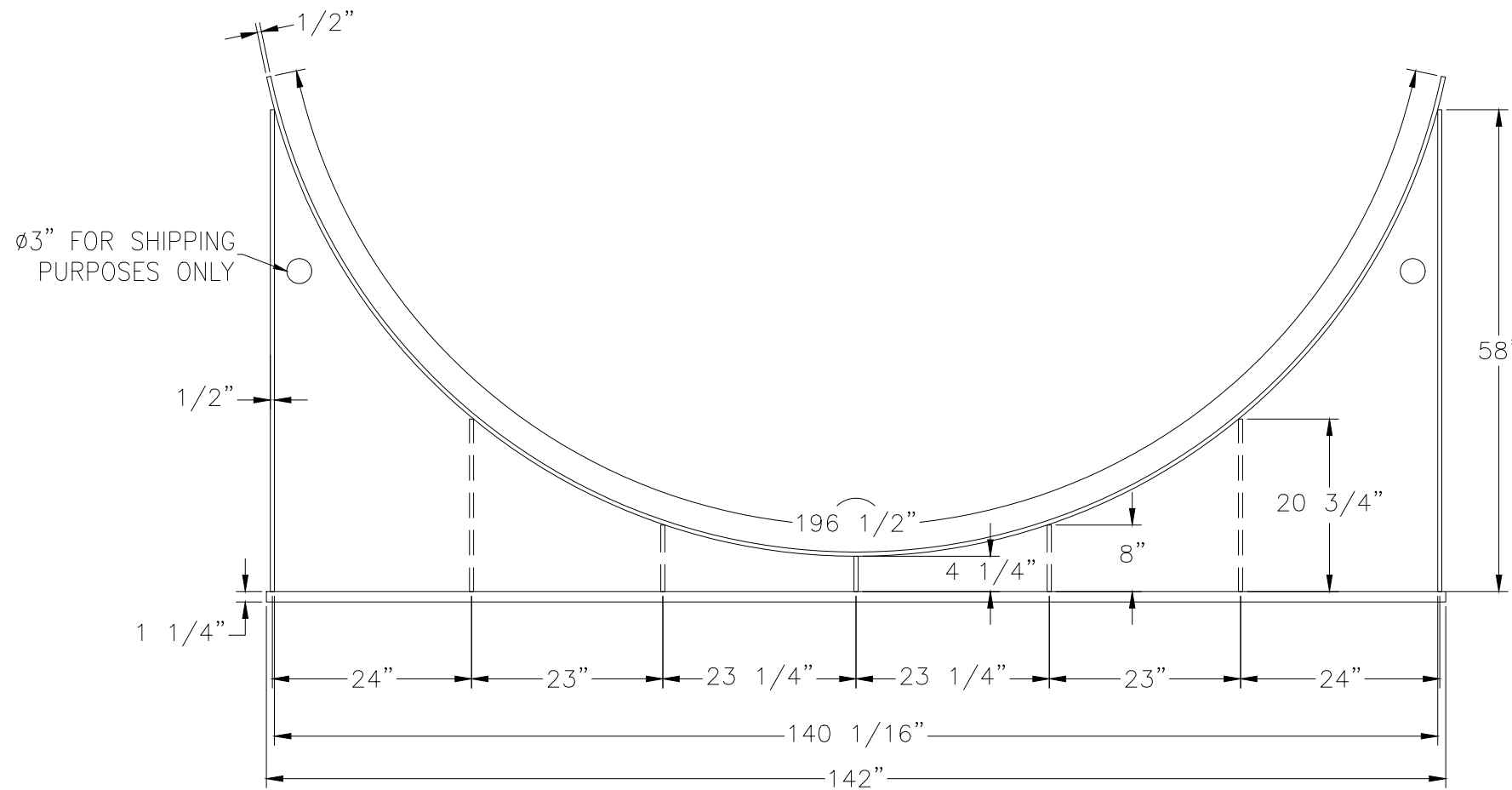
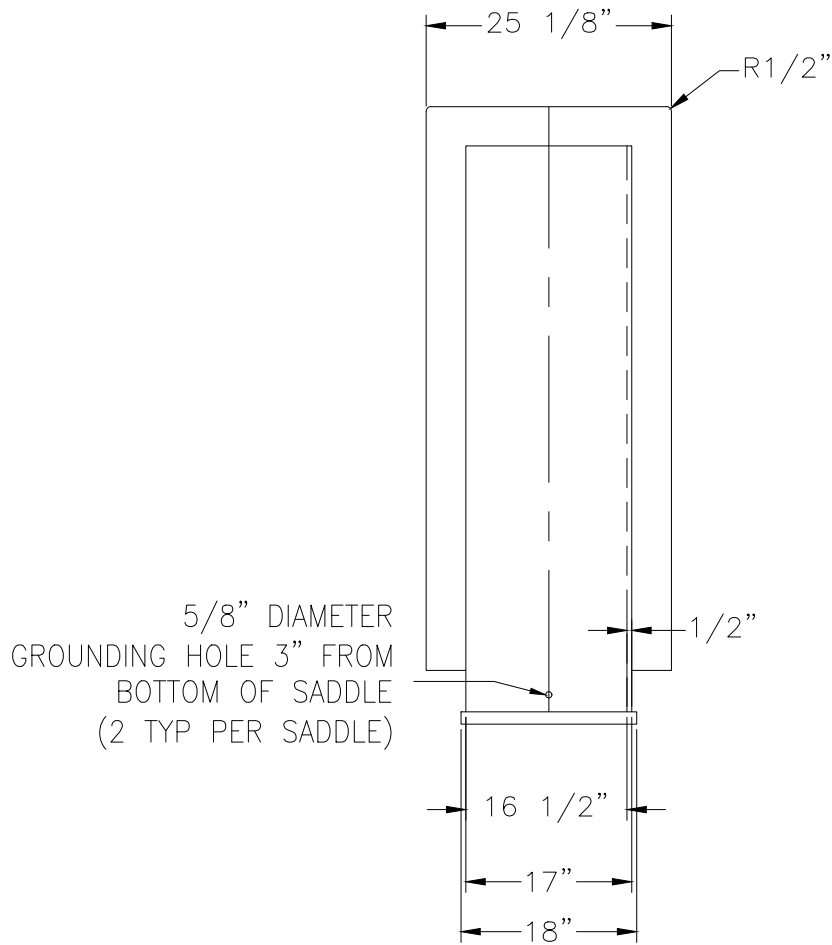
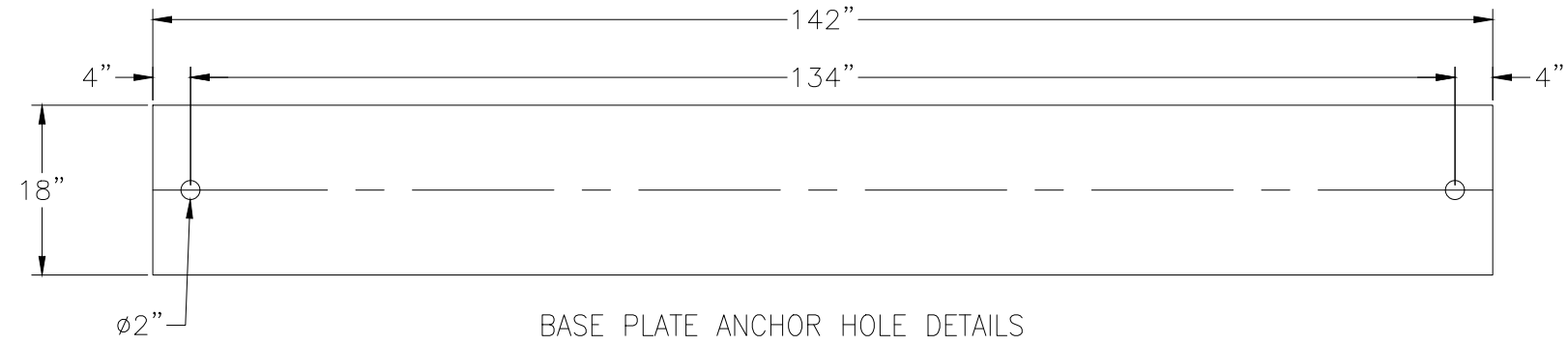
OPERATING PRESSURE: ATMOSPHERIC	JOINT DESIGN: LAP WELD
SPECIFIC GRAVITY: 1.0	ALL LINEAR DIMENSIONS SHALL BE ±1/4" AND ANGULAR DIMENSIONS WITHIN ±1°
TANK MATERIAL: ASTM A36 CARBON STEEL	INTERIOR SURFACES: SSPC-SP-3 (POWER TOOL CLEAN)
PRIMARY SHELL: 3/8" PRIMARY HEADS: 5/16" SECONDARY SHELL: 1/4" SECONDARY HEADS: 1/4"	EXTERIOR SURFACES: SSPC-SP-6 BLAST & 5-7 MILS WHITE URETHANE
	LABEL/MARKING: UNDERWRITERS LABORATORIES UL-142

CUSTOMER:
PROJECT:
AGENT:



P.O. BOX 1279 GOLDSBORO, NC 27533
PHONE: (919)751-1791 FAX: (919)751-8186
DRAWING NUMBER: GIDH50K144SAD 1.11.2022

QUANTITY: ONE (1) REQUIRED
WEIGHT: 69,500 lbs ± 10%



CUSTOMER APPROVAL SIGNATURE/DATE:

QUANTITY: TWO (2) REQUIRED
WEIGHT: 2,386 lbs ± 10%

50,000 GAL 6" TALL SADDLE FOR 144" DIAMETER TANK	
DESIGN DATA	
MATERIAL - ASTM A 36 CARBON STEEL	
EXTERIOR SURFACES: SSPC-SP-6 COMMERCIAL BLAST ONE COAT WHITE URETHANE @5-7mils DFT	

CUSTOMER:
PROJECT:
AGENT:

P.O. BOX 1279 GOLDSBORO, NC 27533
PHONE: (919)751-1791 FAX: (919)751-8186

DRAWING NUMBER:
GIDH50K144SAD/1 1.11.2022